

Bufftech[®]

Smooth Extruded Fence Products

The Bufftech® Advantage

Long-lasting beauty, superior performance and the best protection you can get – that’s the Bufftech Advantage. Bufftech fence comes in an array of sophisticated styles and complementary colors along with premium features to ensure it will outlast and outperform the competition. Bufftech also features a superior warranty including ColorLast® fade protection.

Privacy (Extruded)

- Brookline Smooth 6
- Galveston Smooth 7
- Chesterfield Smooth..... 8
- New Lexington12

Semi-Private

- Breezewood Smooth.....16
- Imperial Smooth17

Contemporary

- Baron Smooth18
- Princeton.....19
- Countess 20

Classic

- Manchester21

Traditional

- Danbury Smooth.....22
- Rothbury23
- Cape Cod.....24

Post & Rail

- 4-Rail25
- 3-Rail26
- 2-Rail.....27
- Crossbuck.....28

Extruded Accessories.....29

Extruded Gates..... 30

Specifications32

Textured Fence 34





Bufftech® Extruded Fence

The Bufftech Advantage starts with details.

Precision Routing assures a clean, realistic look without visible glue or screws.

Heavyweight Pickets provide impact resistance and reduces movement.

Internal Reinforcement limits sagging and maintains a strong and sturdy performance.

Low Gloss finish offers easy maintenance while reducing reflections.

Smooth Colors

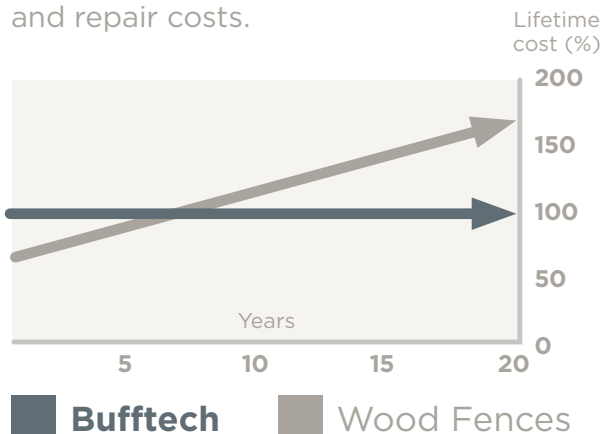


Not all fence product warranties are the same. Many fence manufacturers offer a limited lifetime warranty but do not cover labor costs. By selecting Bufftech® fence, you will gain peace of mind knowing that **you are protected for a lifetime.**

	CERTAINEED BUFFTECH FENCE*	Fence Competitor	Wood Fence Competitor
Length Warranty	LIFETIME	Lifetime	12 years
Color Fade Warranty	YES	None	None
Transferrable Warranty	YES**	No	No
Labor Warranty	YES**	No	No

*Refer to the Bufftech Lifetime Limited Warranty to review the terms of coverage. **Bufftech extruded only.

Did you know that **Bufftech fence is actually less expensive** than wood fence? Although the initial investment may cost you more, you don't need to worry about recurring maintenance and repair costs.



Cost includes fence price averaged over 20 years plus maintenance and repair costs. Cost is expressed as a percentage.

Performance

Bufftech's premium features, including high-quality raw materials, reinforced rails, heavyweight pickets, routed rails and fence posts, and concealed fasteners, ensure it will outlast and outperform other vinyl fences.



With exclusive WindZone™ performance, Bufftech fence is engineered for use in high wind and hurricane conditions, as approved by Miami-Dade County NOA #21-0125.07*. Recognized as the most stringent standards in the country, Miami-Dade test protocols include dynamic wind load testing up to 115 mph.



The Bufftech line also meets requirements of the ASTM and includes styles that comply with local codes for swimming pool applications. Check with your local building code official as local codes may vary.



Bufftech panels block 98% of direct sound, with an (STC) sound transmission class of 21, to create quiet spaces.

*Miami-Dade County-approved NOA #21-0125.07, for exceptional performance in high wind conditions. To comply with WindZone Performance, additional items are needed for installation. Please reference our product catalog. Expires 3/13/2024 .

Peace of Mind



CertainTeed stands behind the Bufftech line with an exceptional lifetime limited transferable warranty. SureStart™ protection, an exclusive CertainTeed benefit, covers warranted repair and replacement costs—including labor, for five years after installation.



CertainTeed also guarantees the performance of Bufftech's products with our proprietary ColorLast® fade protection, a state-of-the-art acrylic formulation that provides superior protection from the harsh rays of the sun.



CertainTeed is actively pursuing strategies to reduce our environmental impact, while increasing the sustainability of our operations and products. CertainTeed conducted a Life Cycle Assessment (LCA) that was submitted to the National Institute of Standards and Technology (NIST) and was published in the building product LCA database, BEES (Building for Environmental and Economic Sustainability).



A company you can trust. For more than 100 years, homeowners and building professionals alike have relied on CertainTeed as a trusted source of innovative, high-quality building products. Bufftech® continues this long-standing tradition with its superior fence line, proudly made in the U.S.A.

Brookline

EXTRUDED PRIVACY FENCE



Brookline Smooth Finish in White

White

Almond

Natural
Clay

Brookline Smooth

Brookline's modern style combines the luxury of complete privacy with durability and low-maintenance.



Heights: 4', 5' & 6'

Picket Style: 7/8" x 7" Tongue & Groove

Post Centers: 6'

Steel Reinforced Bottom Rail

Steel Reinforced Top Rail for Natural Clay

Cap Styles (shown in White)



Gothic



Flat External



New England

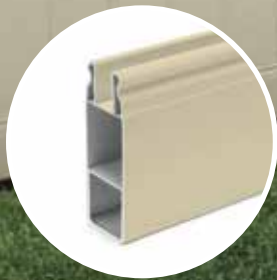


Ball

Ball Cap not available in Natural Clay

Galveston

EXTRUDED PRIVACY FENCE

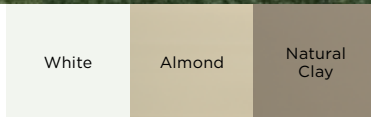


Distinctive Deco Rail Design available with smooth fence styles.

Galveston Smooth Finish in Almond



White Almond



Galveston Smooth Finish



Heights: 7' & 8'

Picket Style: 7/8" x 7" Tongue & Groove
Steel Reinforced Top, Mid & Bottom Rail

Cap Styles (shown in White)



Gothic

Flat External

New England

Ball

Galveston Smooth Finish with Lattice and Victorian (not shown)

Heights: 6' 8" plus 1' 4" Accent

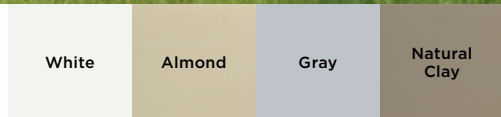
Picket Style: 7/8" x 7" Tongue & Groove
Steel Reinforced Top, Mid & Bottom Rail

Note: posts require reinforcement

Chesterfield



Chesterfield Smooth Finish in Almond and Natural Clay

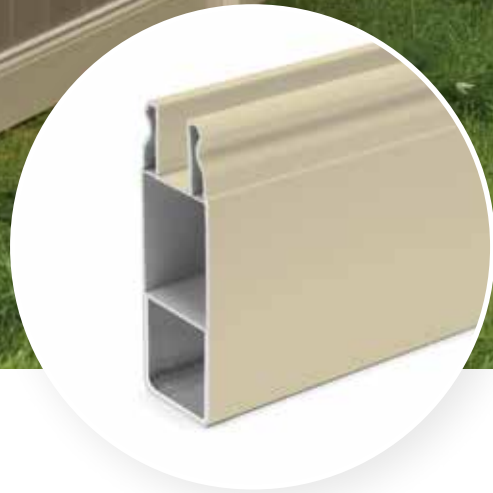


Chesterfield Smooth Finish



Heights: 4', 5' & 6'

Picket Style: 7/8" x 7" Tongue & Groove
Steel Reinforced Bottom Rail
Steel Reinforced Top Rail for Natural Clay
(4' not available in Natural Clay)
(Gray only available for 6' height)



Distinctive
Deco Rail
Design

Cap Styles (shown in White)



Gothic

Flat Internal

Flat External

New England

Ball

Gothic Cap not available in Gray
Ball Cap not available in Natural Clay and Gray
Flat Internal Cap 4' height only

Chesterfield Smooth Finish Decorative Accents and Styles

Customers look to CertainTeed for the latest innovations in style and performance. We're bringing you privacy in a different view with Chesterfield's expanded selection of Smooth Finish Decorative Accents and Styles.

Add a unique, decorative style with Chesterfield Swoop and S Curve to make your fence stand out among the rest.



with Swoop  

Ideal for transitioning from low to high fence.

Heights: Transitions from 6' to 4'

Picket Style: 7/8" x 7" Tongue & Groove
Steel Reinforced Bottom Rail

White

Almond



with S Curve  

Ideal for transitioning from low to high fence.

Heights: Transitions from 6' to 4'

Picket Style: 7/8" x 7" Tongue & Groove
Steel Reinforced Bottom Rail

White

Almond

For homeowners who like their privacy with a touch of style, Chesterfield Smooth offers four great choices.



* Freedom to mix and match post and picket colors.

with Lattice Accent*



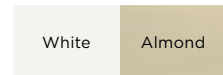
Heights: 4' 8" plus 1' 4" Accent
 & 3' 8" plus 1' 4" Accent
Picket Style: 7/8" x 7"
 Tongue & Groove
 Steel Reinforced Bottom Rail



with Victorian Accent



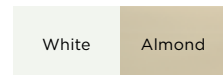
Heights: 4' 8" plus 1' 4" Accent
Picket Style: 7/8" x 7" Tongue
 & Groove and 7/8" x 1-1/2"
 Steel Reinforced Bottom Rail



with Huntington Accent



Heights: 4' 8" plus 1' 4" Accent
Picket Style: 7/8" x 7" Tongue
 & Groove and 1-1/2" Square
 Steel Reinforced Bottom Rail



with Westminster Accent



Heights: 4' 8" plus 1' 4" Accent
Picket Style: 7/8" x 7" Tongue
 Steel Reinforced Bottom Rail



New Lexington



White

Almond

New Lexington

New Lexington offers dependable performance at an economical price with features you'd expect to find on higher-end fence products. New Lexington includes Bufftech's signature "v" groove picket and Classic Curve deco rail design.

Heights: 4', 5' & 6'

Picket Style: 5/8" x 11-3/8" Tongue & Groove
Steel Reinforced Bottom Rail



New Lexington in White

Distinctive
Deco Rail
Design

Cap Styles (shown in White)



Gothic

Flat Internal

Flat External

New England

Ball

New Lexington Decorative Accents and Styles

Customers look to CertainTeed for the latest innovations in style and performance. We're bringing you privacy in a different view with New Lexington's expanded selection of Smooth Finish Decorative Accents and Styles.

Add a unique, decorative style with New Lexington Swoop and S Curve to make your fence stand out among the rest.



with Swoop

Ideal for transitioning from low to high fence.

Heights: Transitions from 6' to 4'

Picket Style: 5/8" x 11-3/8" Tongue & Groove
Steel Reinforced Bottom Rail

White

Almond



with S Curve

Ideal for transitioning from low to high fence.

Heights: Transitions from 6' to 4'

Picket Style: 5/8" x 11-3/8" Tongue & Groove
Steel Reinforced Bottom Rail

White

Almond

For homeowners who like their privacy with a touch of style, New Lexington with Lattice and Victorian Accent offers two great choices.



with Lattice Accent

Heights: 4' 11" plus 1' 1" Accent

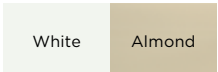
Picket Style: 5/8" x 11-3/8" Tongue & Groove
Steel Reinforced Bottom Rail



with Victorian Accent

Heights: 4' 11" plus 1' 1" Accent

Picket Style: 5/8" x 11-3/8" Tongue & Groove
Steel Reinforced Bottom Rail

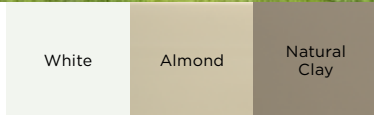


Breezewood Smooth

EXTRUDED SEMI-PRIVATE FENCE



Breezewood in Natural Clay



Breezewood Smooth Finish

Thru-picket "good neighbor", modern design is equally attractive on both sides.



Heights: 4', 5' & 6'
Picket Style: 7/8" x 3"
Picket Spacing: 21/32"
Steel Reinforced Top and Bottom Rail

Cap Styles (shown in White)



Flat External

New England

Gothic

Ball

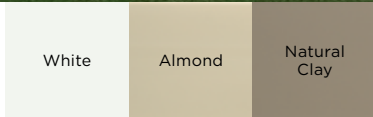
Ball Cap not available in Natural Clay

Imperial Smooth

EXTRUDED SEMI-PRIVATE FENCE



Imperial Smooth Finish in Almond



Imperial Smooth Finish



Heights: 4', 5' & 6' (5' & 6' include midrail)

Picket Style: 7/8" x 3"

Picket Spacing: 7/16"

Steel Reinforced Bottom Rail

Steel Reinforced Top Rail for Natural Clay

Cap Styles (shown in White)



Gothic

Flat Internal

Flat External

New England

Ball

Gothic Cap not available in Natural Clay for 4' heights

Ball Cap not available in Natural Clay

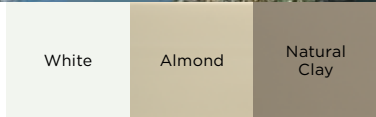
Flat Internal Cap not available for 6' height

Baron Smooth

EXTRUDED CONTEMPORARY FENCE



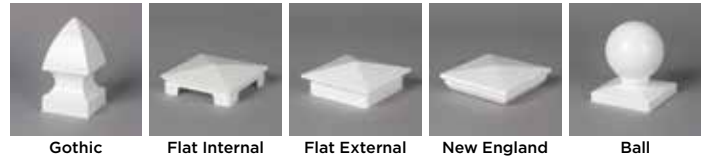
Baron Smooth Finish in White



Baron Smooth Finish



Heights: 4', 5' & 6' (5' & 6' include midrail)
Picket Style: 7/8" x 3"
Picket Spacing: 2-15/16"
Steel Reinforced Bottom Rail
Steel Reinforced Top Rail for Natural Clay
Cap Styles (shown in White)



Gothic Cap not available in Natural Clay for 4' height
Ball Cap not available in Natural Clay

Princeton

EXTRUDED CONTEMPORARY FENCE



Princeton in White



Princeton with Midrail in White

White

Princeton

Heights: 4', 5' & 6' (5' & 6' include midrail)

Picket Style: 7/8" x 1-1/2"

Picket Spacing: 1-3/4"

Steel Reinforced Bottom Rail



Cap Styles (shown in White)



Gothic

Flat Internal

Flat External

New England

Ball

Flat Internal Cap not available for 6' height

Countess

EXTRUDED CONTEMPORARY FENCE



Countess in White

White



Countess with Midrail in White

Countess



Heights: 4', 5' & 6' (5' & 6' include midrail)

Picket Style: 7/8" x 1-1/2", 7/8" x 3"

Picket Spacing: 2-5/16"

Steel Reinforced Bottom Rail

Cap Styles (shown in White)



Gothic

Flat Internal

Flat External

New England

Ball

Flat Internal Cap not available for 6' height

Manchester

EXTRUDED CLASSIC FENCE



Manchester in White

White



Manchester Concave in White

Manchester

Thru-picket “good neighbor” design is equally attractive on both sides. Thru-picket styles are 8’ wide.

Heights: 3’ & 4’

Picket Style: 1-1/2” Square

Picket Spacing: 1-9/16”

Steel Reinforced Bottom Rail

Cap Styles (shown in White)



Gothic



Flat Internal



Flat External



New England



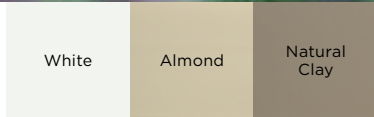
Ball

Danbury Smooth

EXTRUDED TRADITIONAL FENCE



Danbury Smooth Finish Straight in White



Danbury Concave in White

Danbury Smooth Finish Straight/Concave

Thru-picket “good neighbor” design

Heights: 4'

Picket Style: 3" Pointed Picket

Picket Spacing: 2-15/16"

Steel Reinforced Bottom Rail

Cap Styles (shown in White)



Gothic

Flat Internal

Flat External

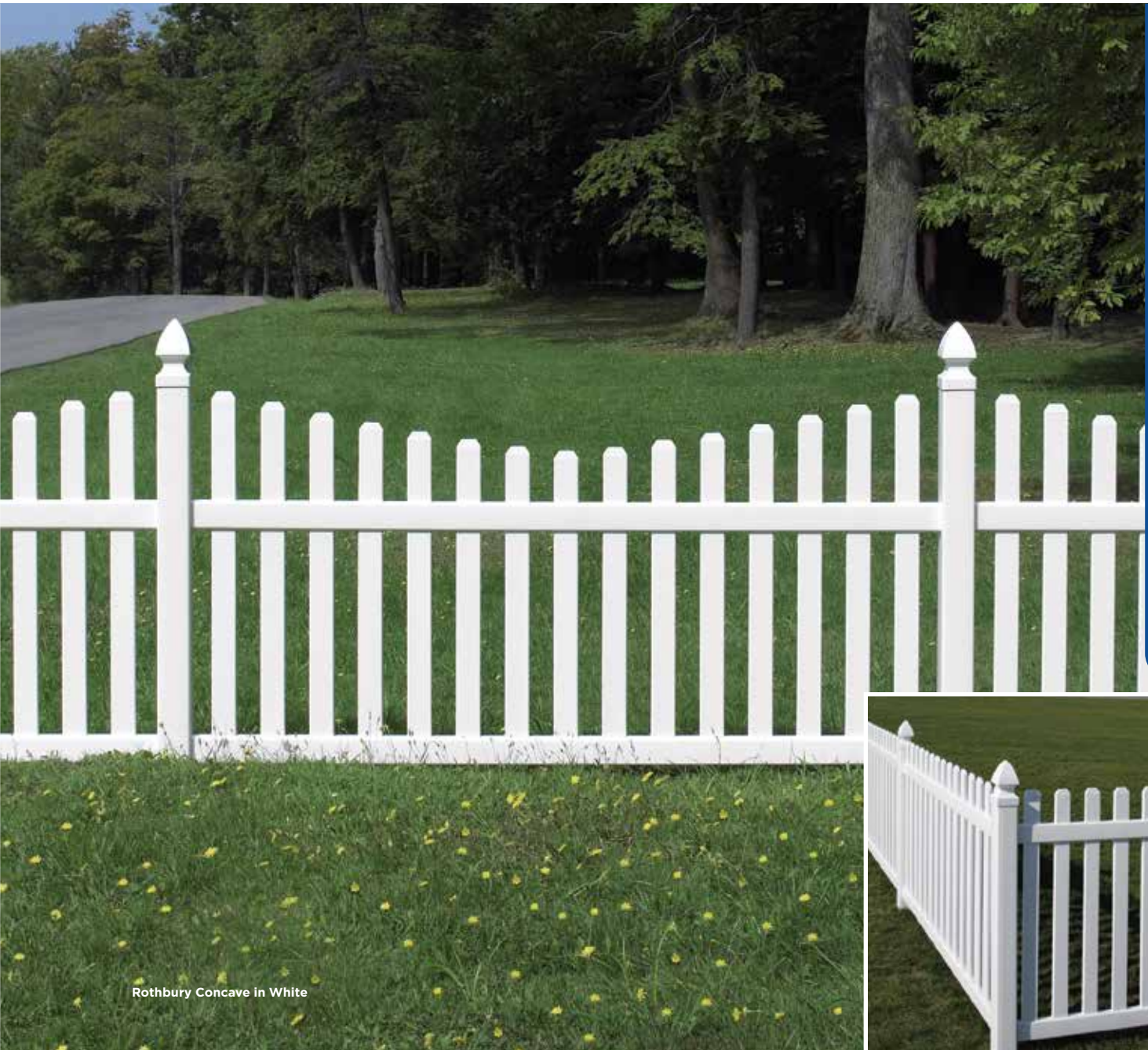
New England

Ball

Gothic Cap not available in Natural Clay for 4' height
Ball Cap not available in Natural Clay for 4' height

Rothbury

EXTRUDED TRADITIONAL FENCE



Rothbury Concave in White



Rothbury Straight in White

White

Rothbury Straight/Concave

Thru-picket "good neighbor" design

Heights: 4'

Picket Style: 3" Dog Ear Picket

Picket Spacing: 2-15/16"

Steel Reinforced Bottom Rail

Cap Styles (shown in White)



Gothic

Flat Internal

Flat External

New England

Ball

Cape Cod

EXTRUDED TRADITIONAL FENCE



Cape Cod Concave

White



Cape Cod Straight

Cape Cod Straight/Concave

Heights: 3' & 4'

Picket Style: 3" Pointed Picket

Picket Spacing: 2-7/16"

Cap Styles



Gothic



Flat Internal



Flat External



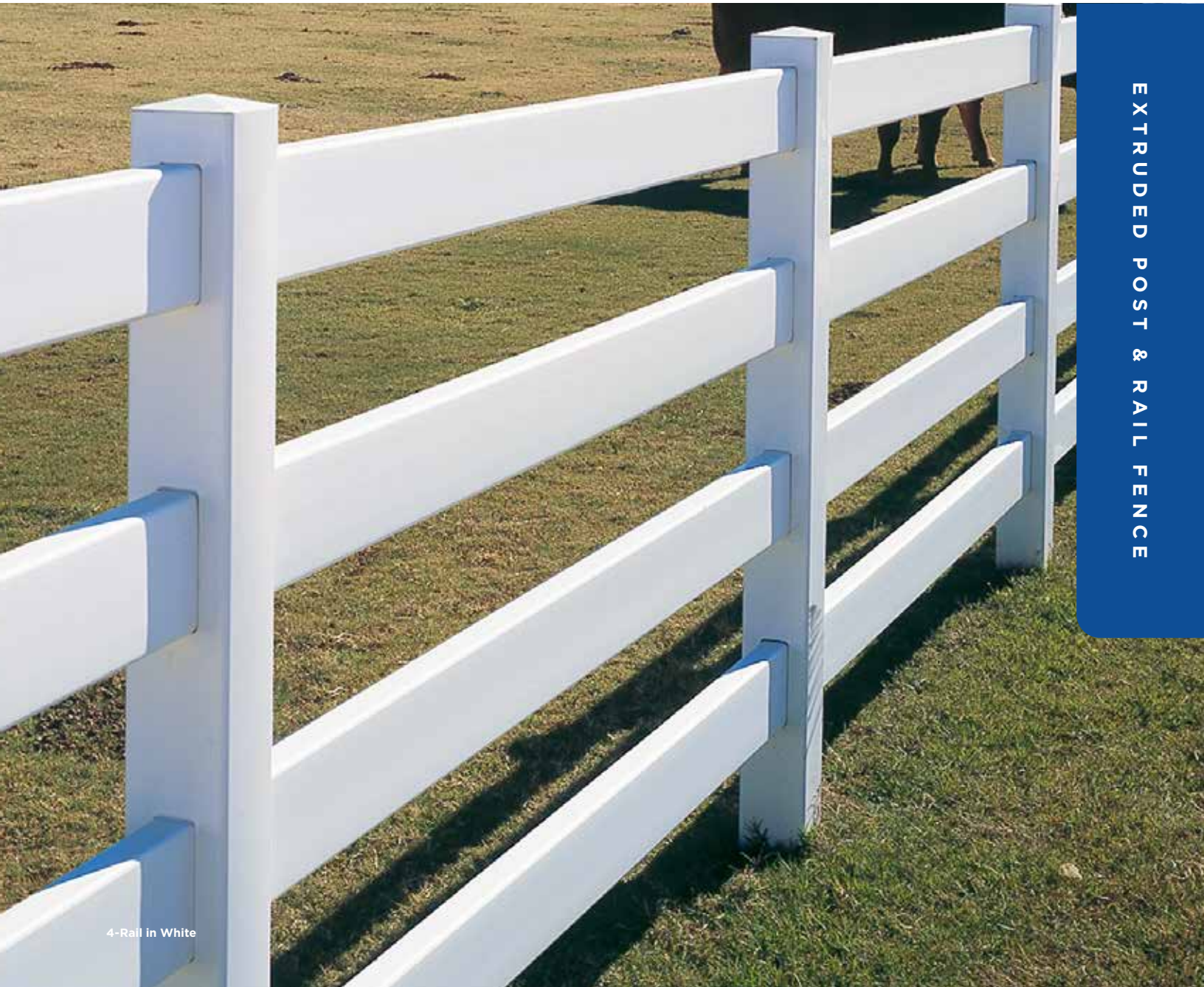
New England



Ball

4-Rail

EXTRUDED POST & RAIL FENCE



4-Rail in White

White

Almond

4-Rail Fence

Bufftech's post & rail fence provides a safe, reliable enclosure for horses and other livestock. Available in smooth or CertaGrain Texture, our post & rail fence offers the authentic look of painted wood fence with the durability, low maintenance and proven performance of Bufftech's premium vinyl design.

Rail Size (White): 1-1/2" x 5-1/2" Ribbed
Ribbed Reinforced Rails

Cap Styles



Gothic

Flat Internal

Flat External

New England

Ball

3-Rail

EXTRUDED POST & RAIL FENCE



3-Rail in White

White

Almond

3-Rail Smooth Finish

Rail Size: 1-1/2" x 5-1/2" Ribbed, 2" x 6" Ribbed
Ribbed Reinforced Rails

Cap Styles



Gothic

Flat Internal

Flat External

New England

Ball

2-Rail

EXTRUDED POST & RAIL FENCE



2-Rail in White

White

Almond

2-Rail Smooth Finish

Rail Size: 1-1/2" x 5-1/2" Ribbed
Ribbed Reinforced Rails

Cap Styles



Gothic

Flat Internal

Flat External

New England

Ball

Crossbuck

EXTRUDED POST & RAIL FENCE



Crossbuck in White

White

Crossbuck

Rail Size: 1-1/2" x 5-1/2" Ribbed
Ribbed Reinforced Rails

Cap Styles



Gothic

Flat Internal

Flat External

New England

Ball

Accessories



PVC Post Caps

Bufftech's standard PVC post caps come in a variety of styles.

Smooth Caps



Ball

Gothic

Flat External

New England

Flat Internal

Solar Post Caps & Lighting

Eco-friendly LED lights provide the ultimate in solar-powered accent lighting. Batteries included.

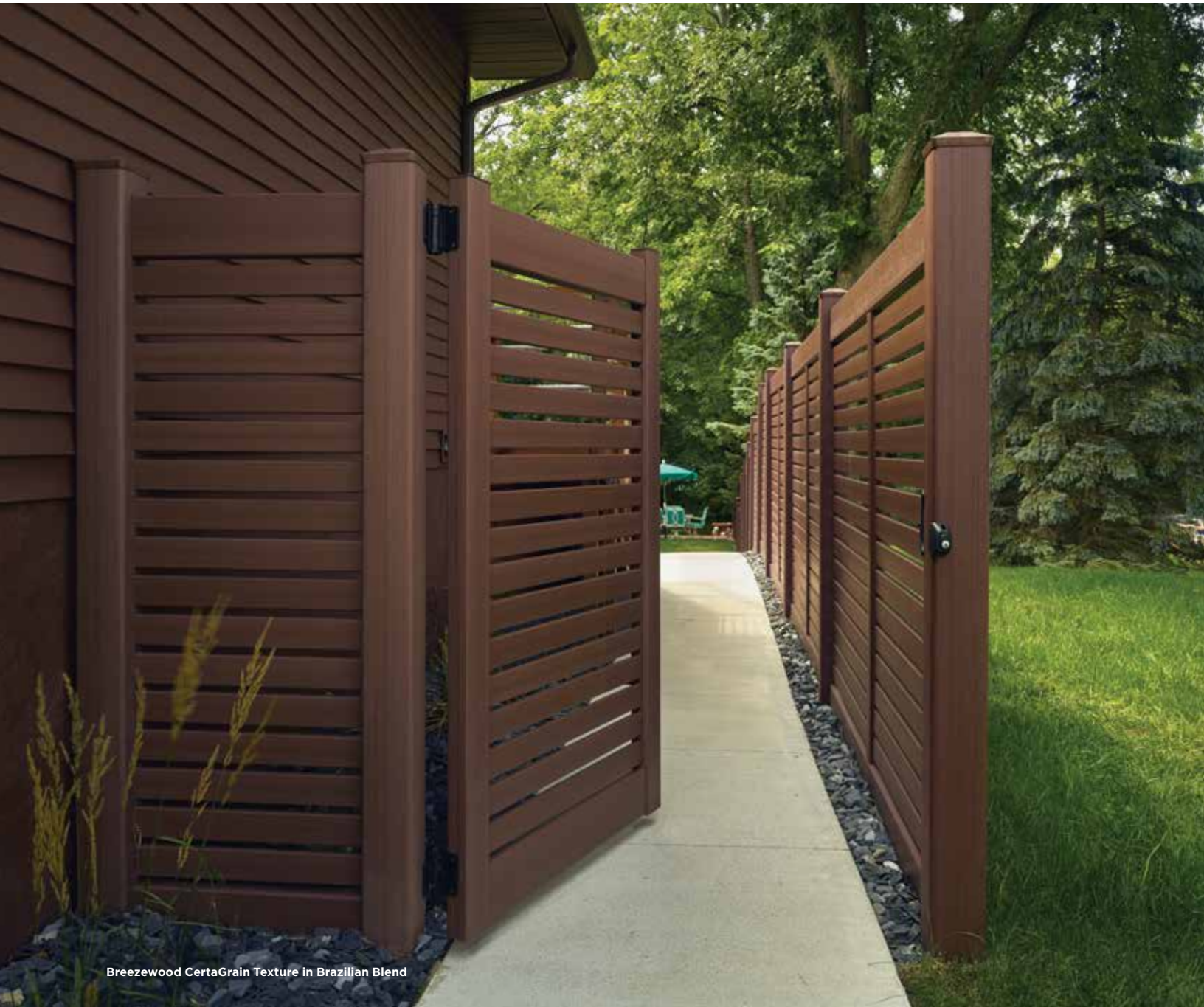


White*

Black*

*Fits both 4" x 4" and 5" x 5" post sizes. Adapter included.

Extruded Gates



Breezewood CertaGrain Texture in Brazilian Blend

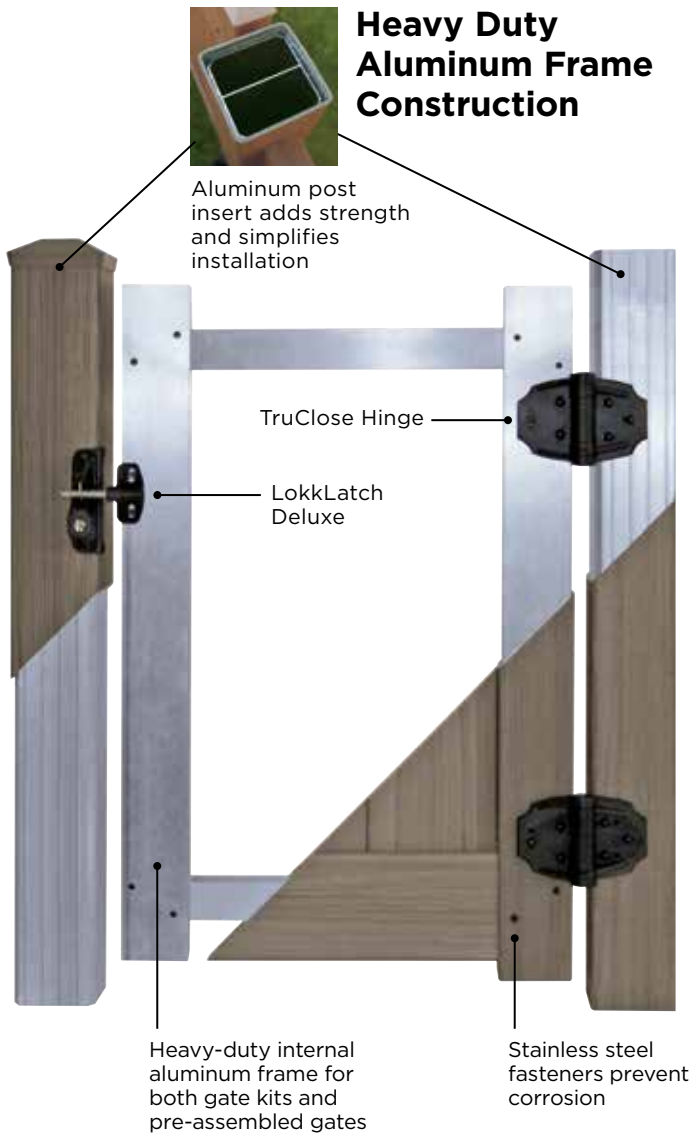
Chesterfield Smooth Finish Concave Gate with Victorian Accent in White



Chesterfield Smooth Finish Convex Gate with Victorian Accent in White



Bufftech offers a wide selection of residential gates designed to match all of our fence styles, in a choice of heights and widths. Beautiful and durable, Bufftech gates deliver easy installation and great performance. Choose from unassembled gate kits or pre-assembled gates that ship ready to install.



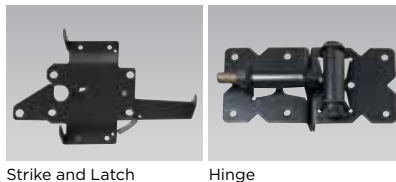
	Pre-Assembled Gate Widths	Unassembled Gate Kit Max Width	Extension Kit Required**
Brookline	50-1/2"	70"	Yes
Galveston	50-1/2"	50-1/2"	No
Chesterfield[†]	36-1/2" 50-1/2" 64-3/4"	70"	Yes
Chesterfield Concave Accent	50-1/2"	na	na
Chesterfield Convex Accent	50-1/2"	na	na
New Lexington	42-1/2" 50-1/2" 65-1/4"	72"	Yes
Breezewood	50"	60"	Yes
Imperial	50"	72"	Yes
Baron	50"	72"	Yes
Princeton	50"	72"	Yes
Countess	50"	72"	Yes
Manchester	50"	50"	No
Manchester Concave	na	50"	No
Danbury	50"	50"	No
Cape Cod	50"	60"	Yes
Rothbury	50"	50"	No
2-Rail*	na	72"	na
3-Rail*	na	96"	na
4-Rail*	na	96"	na
Crossbuck*	na	96"	na

[†] Not all widths available in all heights/styles
^{*} All Gates are rackable, except Post & Rail (2-Rail, 3-Rail and 4-Rail smooth finish), and Crossbuck styles.
^{**} For unassembled gate kits over 50" wide to achieve maximum width

EXTRUDED GATES

Stainless Steel Gate Hardware

Give your gate the old-world look of wrought iron with our rugged, rust-free stainless steel gate hardware. The hardware includes hinge, strike and latch and is available in Black Pebble.



High Performance Nylon Gate Hardware Kits

Versatile and virtually maintenance free, our premium nylon gate hardware offers key lockable latches, self-closing hinges and contoured gate handles. Available in Black.

LokkLatch® Key-Lockable Gate Latch, GateHandle™, MagnaLatch® Magnetic Safety Gate Latch, LokkLatch Magnetic™, and TruClose® Self-Closing Gate Hinges are registered trademarks of D&D Technologies.



Specifications & Color Availability

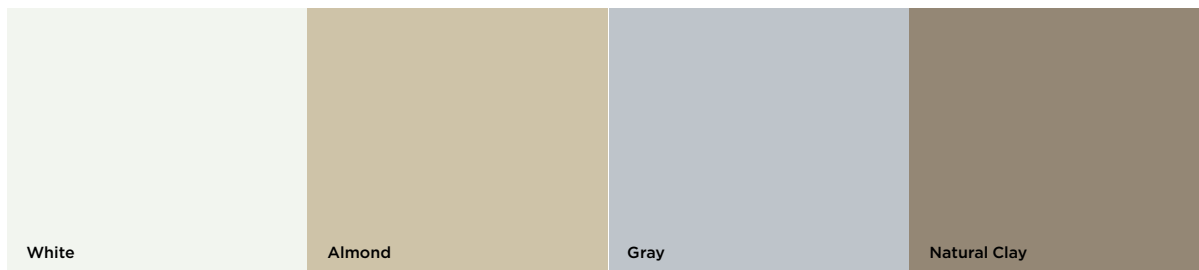
		Fence Type	Height	Racking	Post Size	Section Width	Picket Size	Picket Spacing	Code	Metal Rail/Panel Reinforcement
Privacy	Brookline Smooth	Extruded	4', 5', 6'	Stepping Recommended	5" x 5"	72"	7/8" x 7" Tongue & Groove	N/A	 	Bottom**
	Galveston Smooth	Extruded	7', 8'	5° *	5" x 5"	96"	7/8" x 7" Tongue & Groove	N/A		Top, Middle, Bottom
	Chesterfield Smooth	Extruded	4', 5', 6'	10° *	5" x 5"	96"	7/8" x 7" Tongue & Groove	N/A	 	Bottom**
	New Lexington	Extruded	4', 5', 6'	7° *	5" x 5"	96"	5/8" x 11-3/8" Tongue & Groove	N/A		Bottom
Semi-Private	Breezewood Smooth	Extruded	4', 5', 6'	Stepping Recommended	5" x 5"	96"	7/8" x 3"	21/32"		Bottom**
	Imperial Smooth	Extruded	4'	10°	4" x 4"	96"	7/8" x 3"	7/16"		Bottom**
5', 6'	5°		5" x 5"	 						
Contemporary	Baron Smooth	Extruded	4'	10°	4" x 4"	96"	7/8" x 3"	2-15/16"		Bottom**
			5', 6'	5°	5" x 5"					
	Princeton	Extruded	4'	10°	4" x 4"	96"	7/8" x 1-1/2"	1-3/4"		Bottom
			5', 6'	5°	5" x 5"					
	Countess	Extruded	4'	10°	4" x 4"	96"	7/8" x 1-1/2" 7/8" x 3"	2-5/16"		Bottom
			5', 6'	5°	5" x 5"					
Classic	Manchester	Extruded	3', 4'	5°	5" x 5"	96"	1-1/2" x 1-1/2"	1-9/16"		Bottom
Traditional	Danbury Smooth	Extruded	4'	5°	4" x 4"	96"	7/8" x 3"	2-15/16"		Bottom
	Rothbury	Extruded	4'	5°	4" x 4"	96"	7/8" x 3"	2-15/16"		Bottom
	Cape Cod	Extruded	3', 4'	15°	4" x 4"	72"	7/8" x 3"	2-7/16"		None
Post & Rail	Post & Rail Smooth	Extruded	3', 4', 5'	5°	5" x 5"	96"	N/A	N/A		None
	Crossbuck	Extruded	4'	5°	5" x 5"	96"	N/A	N/A		None

*Accents will reduce the amount of racking

**Reinforced top rail for Natural Clay
5' and 6' fence height meet pool code

Colors Extruded

Smooth



Rails	White	Almond	Gray	Natural Clay
2" x 6" Deco x 71"	●	●		●
2" x 6" Deco x 95" (Top/Bottom) 2" x 6" x 95" (Midrail)	●	●		●
2" x 6" Deco x 95"	●	●	●	●
1-1/2" x 5-1/2" Deco x 95"	●	●		
2" x 6" x 95"	●	●		●
1-3/4" x 3-1/2" x 95-1/2"	●	●		●
1-3/4" x 3-1/2" x 95-1/2"	●	●		●
1-3/4" x 3-1/2" x 95-1/2"	●			
1-3/4" x 3-1/2" x 95-1/2"	●			
2" x 6" x 94-1/2" (Bottom) 2" x 3-1/2" x 95" (Top)	●			
1-3/4" x 3-1/2" x 95-1/2"	●	●		●
1-3/4" x 3-1/2" x 95-1/2"	●			
1-3/4" x 3-1/2" x 71-1/2"	●			
1-1/2" x 5-1/2" Ribbed or 2" x 6" Ribbed	●	●		
1-1/2" x 5-1/2" Ribbed	●			

Looking For More Options?

Bufftech is the undisputed leader in style, color and texture. Bufftech also offers fence products with textures molded from real wood and stone to deliver the most authentic look today. With our exclusive CertaGrain® technology or TrueTexture™ molded process, no one comes close to Bufftech.



Visit us at www.certainteed.com/bufftech or see our Molded and Extruded Textured Fence Products brochure for more details.



CertainTeed products are designed to work together and complement each other in color and style to give any home a beautiful, finished look.



POLYMER SHAKES & SHINGLES



VINYL SIDING



INSULATED SIDING



SOFFIT



PVC EXTERIOR TRIM & BEADBOARD



VINYL CARPENTRY® TRIM



STONE



HOUSEWRAP



ROOFING AND VENTILATION



DECKING AND RAILING



MOLDED FENCE



EXTRUDED FENCE



facebook.com/certainteed



[YouTube youtube.com/certainteedsaintgobain](https://youtube.com/certainteedsaintgobain)



CertainTeed

CEILING • DECKING • FENCE • GYPSUM • INSULATION • RAILING • ROOFING • SIDING • TRIM
 20 Moores Road, Malvern, PA 19355 Professional: 800-233-8990 Consumer: 800-782-8777 certainteed.com

©01/23 CertainTeed, Printed in the USA, Code No. 03-00-1668-NA-EN